

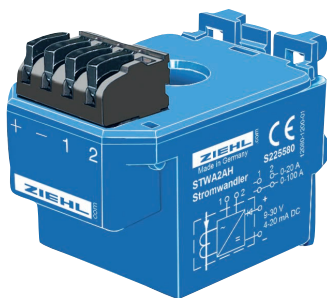
# AC-Electronic Current Transducer STWA2AH

## with analog output

### STWA2AH

Electronic current transducer

AC 0...20 A / 0...100 A -  
DC 4...20 mA



Part number: **S225580**

The STWA2AH is a measuring transducer for AC currents 0...100 A, divided in 2 ranges 0...20 A and 0...100 A. Multiple loops of the conductor through the transformer reduces the measuring range correspondingly (for instance to 0...5 A with four loops).

For the monitoring of currents of any level, the STWA2AH is simply looped into the secondary circuit of a large transformer with secondary 5 A (cable four times through the STWA2AH). Consequently, the output is proportional to the primary current of the transformer, e.g. 0...100

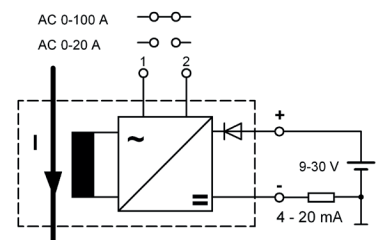
A for a transformer with 100/5 A.

The analog output is isolated. The STWA 2 AH is in 2-wire execution and needs a supply-voltage DC 9...30 V.

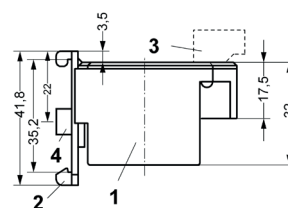
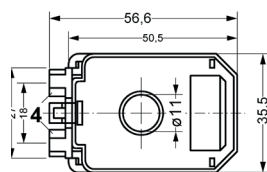
**Application:** The STWA" AH makes it possible to monitor the value of an AC current. The output signal can be evaluated or displayed with components with analog inputs, e.g. ZIEHL TR210, STW1000V2 or MINIPAN®.

- current-proportional analog output DC 4...20 mA = AC 0...20 / 0...100 A (isolated)
- electrical connection via screwless pluggable terminals
- supply voltage DC 9...30 V (2-wire)
- DIN-rail-mount or with screws
- plug-in current transformer (Ø 11 mm)

Supply voltage	DC 9...30 V (2-wire), depending on load
Monitoring ranges	AC 0 - 20 / 0...100 A
Analog output	DC 4 - 20 mA (max. 32 mA)
Adjustment time	< 0,5 s.
Error (of scale, above 10% / I <sub>rated</sub> )	<5%
Temperature coefficient	0...55°C: <0,06%/K (-20...0°C: <0,5%/K)
Nominal frequency	50/60 Hz
Operating range	30...400 Hz
Error	≤ 0,1%/Hz (30 - 50 Hz) ≤ 0,05%/Hz (60 - 400 Hz)
Overload cap. 20/100 A	63 A / 360 A continuously
Rated ambient temperature range	-20...+55°C
Housing	Design H
Dimensions (h x w x d)	42 x 36 x 56 mm
Diameter for conductor	11 mm
Weight	app. 90 g



### Dimension illustrations



- 1 Housing
- 2 Clip for DIN-rail (removeable)
- 3 Terminal (pluggable)
- 4 Wall-mounting (M4)